

Spicer® Tag Axle

R22BS
22,000 lbs. [9,979 kg]

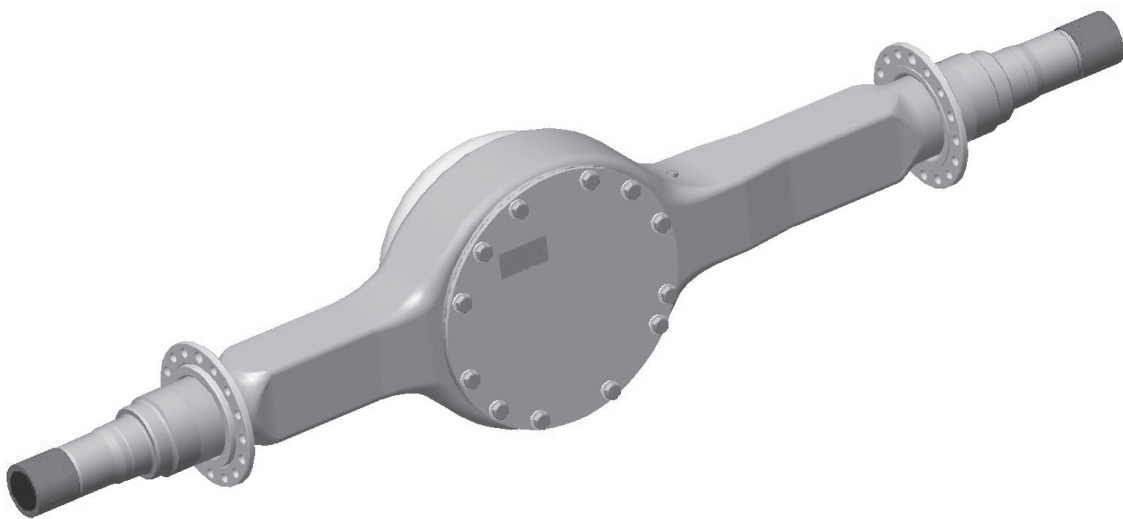


SPICER®

Drivetrain Systems

The New Spicer® Tag Axle

- Standard "R" Series spindles for common fitment
- Standard housing bowl and box size
- Weighs only 116 kg
- Sealed standard housing
- Uses common torque rod brackets and axle seats
- 9,979 kg GAWR



For spec'ing or service assistance, call (03) 9213-5555 or visit our website at www.dana.com.au

Dana Australia Pty Ltd
8 Hudson Court
Keysborough, VIC 3173 Australia

www.dana.com.au



SPICER[®]

Drivetrain Products