

Spicer® Integral Arm Steer Axles



SPICER®

Drivetrain Systems

E-1322I
E-1462I
E-1462W
(6,000 kg - 6,636 kg)

Steer axles with forged steel Integral Arm knuckles and standard or deep drop extra-capacity beams.



The unique dual-drawkey and spring washer kingpin retention system along with a robust beam forging design provides improved total vehicle alignment capability and axle durability.

The flexibility of the Integral Arm forged knuckle and the family of beam widths and drops available maximises vehicle performance in a wide variety of applications by reducing weight and increasing steering cut.

FEATURES	BENEFITS
Integral Arm Knuckle – Exclusive one-piece forging design including the steer arm, tie rod arm, and spindle.*	Forged knuckle reliability for up to 55° turn angle and lightweight.**
Dual-Drawkey Kingpin Retention – Same-side location with spring washer tensioning and a widened and more rigid beam kingpin boss.*	Improved durability and alignment capability, along with reduced maintenance in a compact package.
Kingpin joint sealed thrust bearings and compressible kingpin inserts.*	Improved durability and reduced maintenance.
Standard and Wide Beam Widths.	Maximum manoeuvrability.
Standard and Deep Beam Spring Pad Drops.	Standard or lowered chassis suspension fit-up.
Options – 1-1/2 12 UNF D-Flat spindle threads and 30-50° stop screw assembly.	Compatibility with varying OEM design and assembly requirements.

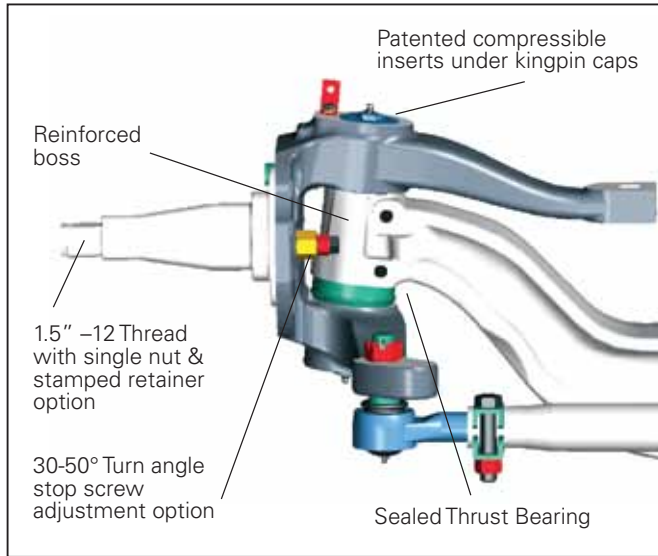
*Patented or Patent Pending Features
**1462I & 1462W Max Turn Angle Capability 50°

SPICER®

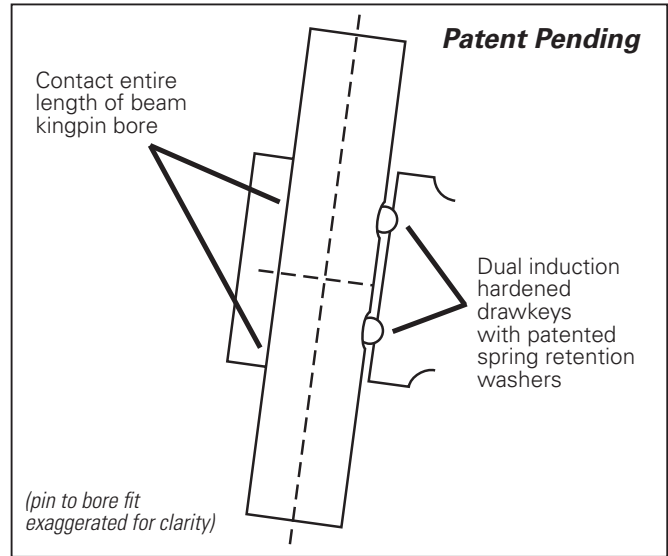
Drivetrain Products

Spicer® Integral Arm Steer Axles

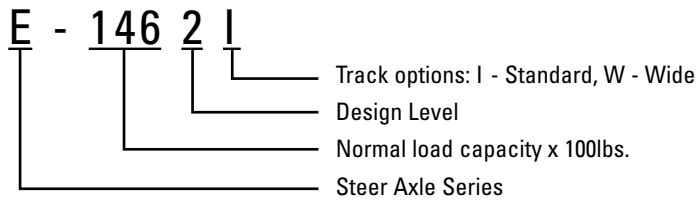
Features and Options:



Maximum Contact Kingpin Joint:



Model Nomenclature:



Specifications:

MODEL	GAWR	KINGPIN INTERSECTION	SPRING PAD DROP	CENTER DROP	AXLE WEIGHT
E-1322I	6,000kg	1,753mm	88.9mm	21.8mm	158kg
	6,000kg	1,753mm	127mm	21.8mm	164kg
E-1462I	6,622kg	1,753mm	88.9mm	21.8mm	159kg
	6,622kg	1,753mm	127mm	21.8mm	168kg
E-1462W	6,622kg	1,803mm	88.9mm	21.8mm	161kg
	6,622kg	1,803mm	127mm	21.8mm	171kg
	6,622kg	1,816mm	95mm	21.8mm	161kg

For spec'ing or service assistance, call (03) 9213-5555 or visit our website at www.dana.com.au

Dana Australia Pty Ltd
8 Hudson Court
Keysborough, VIC 3173 Australia

www.dana.com.au



SPICER®

Drivetrain Products