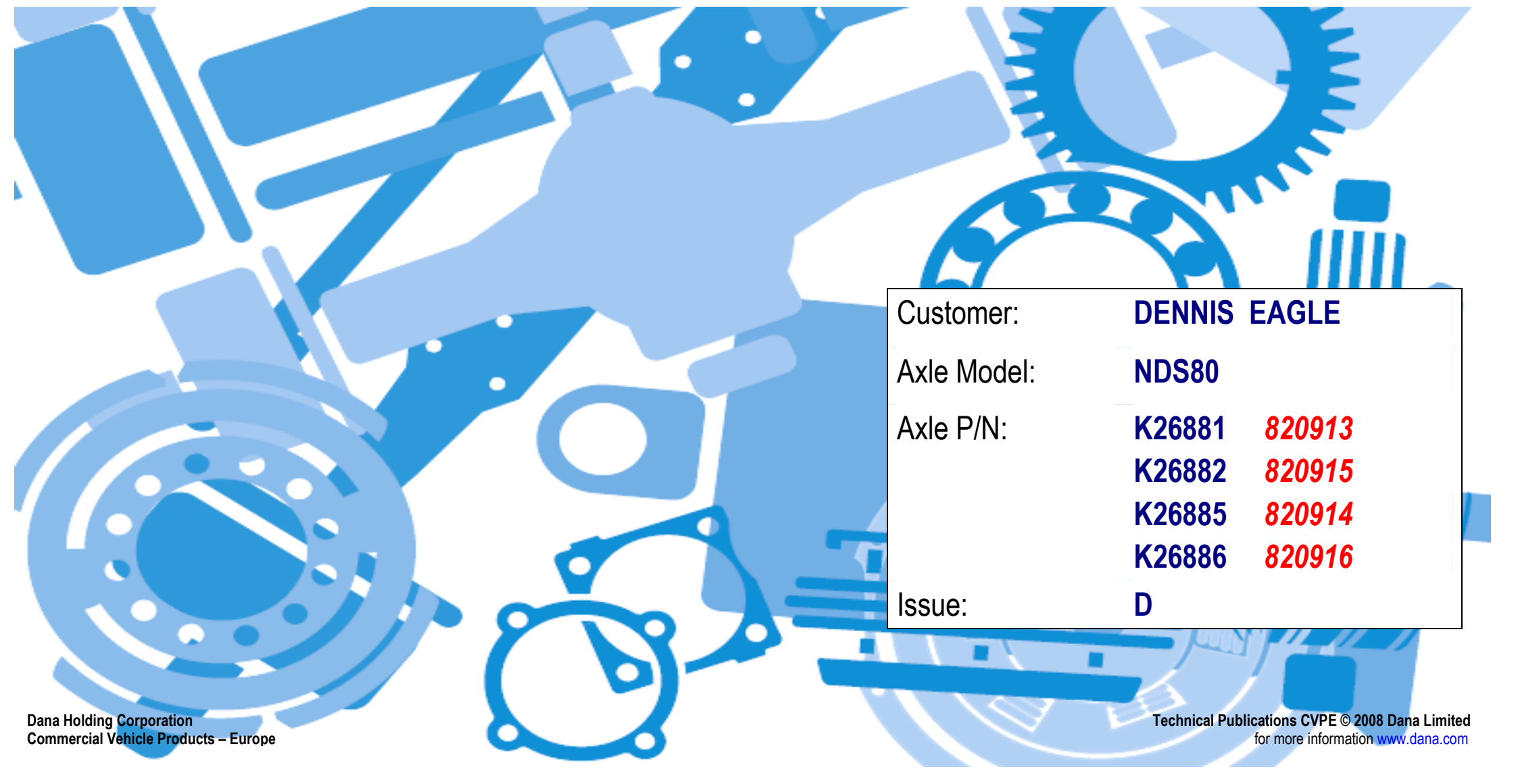




IPL-0150

ILLUSTRATED PART LIST

A large, stylized blue illustration of various mechanical components, including gears, bearings, and shafts, serves as the background for the page.

Customer:	DENNIS EAGLE
Axle Model:	NDS80
Axle P/N:	K26881 820913
	K26882 820915
	K26885 820914
	K26886 820916
Issue:	D

The description, testing procedures, and specifications contained in this parts / service publication were current at time of writing. This manual will not be updated. If in doubt about any aspect of maintenance or servicing of the axle please contact the vehicle builder or our service department directly.

SPICER[®] products are subject to continuous development and we reserve the right to modify procedures and to make changes in specifications at any time without prior notice and without incurring in any obligation.

The recommendations of the vehicle manufacturer should be considered as the primary source of service information regarding this **SPICER**[®] product. This manual is intended to be used as a supplement to such information.

Any references to brand names in this publication are made simply as an example of the types of tools and materials recommended for use and, as such, should not be considered as an endorsement.

This manual is the property of **Commercial Vehicle Products – Europe**, a division of **Dana Holding Corporation**, and may not be copied or disseminated without prior agreement of **Commercial Vehicle Products– Europe**, a division of **Dana Holding Corporation**.

Commercial Vehicle Products – Europe, a division of **Dana Holding Corporation**, recommends following all manufacturers recommendations for the proper handling and disposal of lubricants and solvents. For further information please contact the lubricants and solvents supplier.

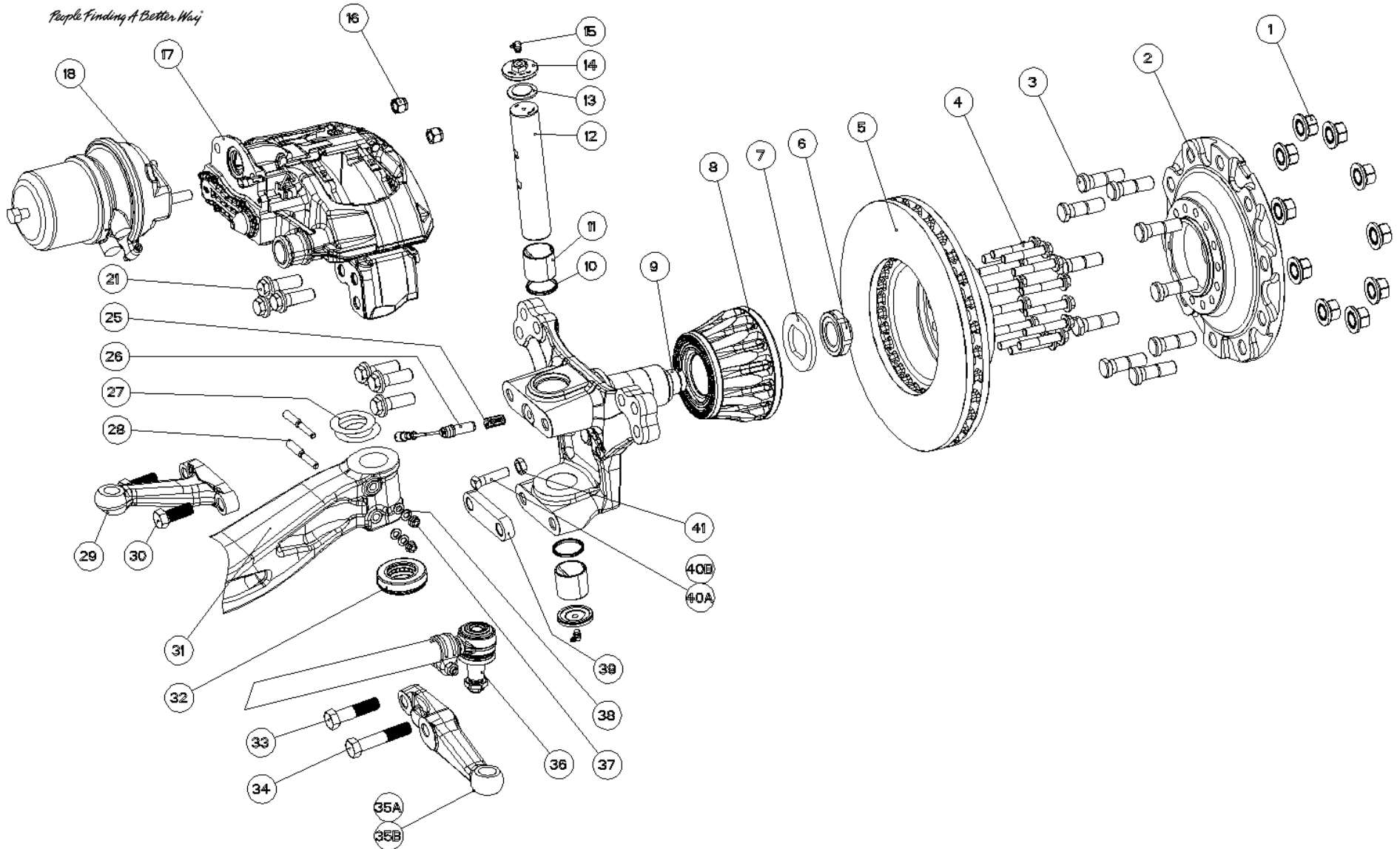
EVERY EFFORT HAS BEEN MADE TO ENSURE THE ACCURACY OF THE INFORMATION CONTAINED WITHIN THIS MANUAL.

HOWEVER, COMMERCIAL VEHICLE PRODUCTS – EUROPE, A DIVISION OF DANA HOLDING CORPORATION, MAKES NO EXPRESSED OR IMPLIED WARRANTY OR REPRESENTATION BASED ON THE ENCLOSED INFORMATION.

Last Modification	Date	Approved by	Date	Issue	Eng. Change
Released	16/09/09	E. Miracoli	16/09/09	A	NC09555
Updated	10/02/10	A. Urio	10/02/10	B	NC10411
Updated	14/12/10	A. Urio	14/12/10	C	NC10608
Brake disc was F4974/88	20/12/12	A. Urio	20/12/12	D	NC12535A



People Finding A Better Way




Dana Holding Corporation
Commercial Vehicle Products – Europe

Technical Publications CVPE © 2008 Dana Limited
for more information www.dana.com

NDS80 K26881 – K26882 – K26885 – K26886 Part List & Tightening Torques

Item	Part Number				Description	Qty ⁰
	K26881	K26882	K26885	K26886		
1		833206			Wheel nut	20
2		F5138/28			Wheel hub ³	2
3		833198			Wheel bolt ³	20
4		F5064/55			Flanged bolt	28
5		F5223/88			Brake Disc	2
6		F5169/77			Hub Bearing – Nut	2
7		F5170/30			Hub Bearing – Collet washer	2
8		SL279/4			Hub Bearing – Unitized	2
9		F5155/2			Knuckle ⁶	2
10		820518			Kingpin – Seal ²	4
11		806334			Kingpin – Bushing ^{2,6}	4
12		F5084/14			Kingpin ²	2
13		971010			Kingpin – Foam insert ²	4
14		971370			Kingpin – Cap ²	4
15		1001414			Grease nipple (90°) ²	4
16		MX-1-1601			Nut – Self Lock	4
17	SM486/56K		SM486/50K		Air Disc Brake (ADB) assy – LH	1
	SM486/55K		SM486/49K		Air Disc Brake (ADB) assy – RH	1
18	828118	828112	SM487/101K		Air Chamber – LH	1
	828119	828113	SM487/101K		Air Chamber – RH	1
21		833175			Brake fixing – Bolt	12
25		830168			ABS sensor – Bush	2
26		833017			ABS sensor	2
27		817493			Kingpin – Adjusting shim (0.13mm) ²	AR ¹
		817494			Kingpin – Adjusting shim (0.25mm) ²	AR ¹
28		160HP104-1			Drawkey ²	4
29	F5155/9		N/A		Top steering lever	1
30	ML6020/50X		N/A		Top steering lever – Bolt	2
31	F5131/1	F5133/1	F5132/1	F5134/1	Beam - Axle	1
32		220HC104			Thrust bearing ²	2
33	ML6020/65X	ML6020/80X	ML6020/65X		Bottom steering lever – Bolt	2
34	ML6020/80X	ML6020/100X	ML6020/80X		Bottom steering lever – Bolt	2
35A	F5155/8		F5165/8		Bottom steering lever – LH	1
35B	F5155/7		F5165/7		Bottom steering lever – RH	1
36	K26785/1S	K26785/2S	K26785/3S	K26785/2S	Socket and Tie Rod assy	1
	F5044/12A	F5044/12B	F5044/12C	F5044/12B	Tie Rod Tube	1 ⁴
		F4920/13			Clamp Assy	2 ⁴
		F5044S			Socket assy – LH ⁵	1 ⁴
		F5045S			Socket assy – RH ⁵	1 ⁴
		F5044/15			Hardware – Castle nut ⁵	2 ⁴
37		220HN103			Drawkey – Nut ²	4
38		1460HN100			Drawkey – Washer ²	8
39	N/A	F5155/150	N/A	F5062/150	Bottom steering lever – Spacer	1
40B		971454		816366	Stop Bolt – Back Lock	2
41		SL224/8			Stop Bolt – Nut	2

NOTES:

- ⁰ Quantities listed are for complete axle unit -
- ¹ As Required - 
- ² Available as a Service Kit: 12280/5 & 12280/6
- ³ Available as a Sub-Assembly: K26853/1
- ⁴ Comprising tie rod assembly: Item # 36 (see chart for specific part number)
- ⁵ Available as a Sub-Assembly: SF5044S (LH) & SF5045S (RH)
- ⁶ Available as a Sub-Assembly: SF5155/2

ADDITIONAL INFORMATION (AI):

- AI1 Service Manual NDS **613513**
- AI2 Lubrication Manual **613511**
- AI3 Service Manual Disc Brake SN6.../SN7.../SK7.../NA7... **613512**

Item	Part Number	Description	Type	Torque (N-m)	Torque (ft-lbs)
1	833206	Wheel nut	M22 x 1,5	644 - 712	475 - 525
4	F5064/55	Flanged bolt	M14 x 1,5	236 - 260	174 - 192
6	F5169/77	Hub Bearing – Nut	M42 x 2	700 - 770	516 - 568
14	971370	Kingpin – Cap	2,375 - 16 UN	88 - 108	65 - 80
16	MX-1-1601	Nut – Self Lock	M16 x 1,5	180 - 210	133 - 155
21	833175	Brake fixing – Bolt	M20 x 1,5	475 - 533	350 - 393
30	ML6020/50X	Top steering lever – Bolt	M20 x 2,5	705 - 780	520 - 575
33	ML6020/65X	Bottom steering lever – Bolt	M20 x 2,5	705 - 780	520 - 575
34	ML6020/80X	Bottom steering lever – Bolt	M20 x 2,5	705 - 780	520 - 575
	ML6020/100X	Bottom steering lever – Bolt	M20 x 2,5	705 - 780	520 - 575
37	220HN103	Drawkey – Nut	,375 - 16 UNC	33 - 49	24 - 36
41	SL224/8	Stop Bolt – Nut	5/8" - 18 UNF	122 - 163	90 - 120



Dana Holding Corporation

Commercial Vehicle Products – Europe

Dana Automoción S.A.

Polígono Industrial de Landaben, Calle E

31012 Pamplona / Spain

TEL (+34-948) 289 100 FAX (+34-948) 188 164

APPLICATION POLICY

Capability ratings, features and specifications vary depending upon the model type of service. Applications approvals must be obtained from Commercial Vehicle Products - Europe. We reserve the right to change or modify our product specifications, configurations, or dimensions at any time without notice.

People Finding A Better Way[®]