

SPEC00001532

ILLUSTRATED PART LIST

Customer:	<b>DENNING</b>
Axle Model:	<b>NDS80LF</b>
Axle P/N:	<b>10061618</b> _____
Issue:	<b>B</b>

The description, testing procedures, and specifications contained in this parts / service publication were current at time of writing. This manual will not be updated. If in doubt about any aspect of maintenance or servicing of the axle please contact the vehicle builder or our service department directly.

**SPICER**® products are subject to continuous development and we reserve the right to modify procedures and to make changes in specifications at any time without prior notice and without incurring in any obligation.

The recommendations of the vehicle manufacturer should be considered as the primary source of service information regarding this **SPICER**® product. This manual is intended to be used as a supplement to such information.

Any references to brand names in this publication are made simply as an example of the types of tools and materials recommended for use and, as such, should not be considered as an endorsement.

This manual is the property of **Commercial Vehicle Products – Europe**, a division of **Dana Holding Corporation**, and may not be copied or disseminated without prior agreement of **Commercial Vehicle Products– Europe**, a division of **Dana Holding Corporation**.

**Commercial Vehicle Products – Europe**, a division of **Dana Holding Corporation**, recommends following all manufacturers recommendations for the proper handling and disposal of lubricants and solvents. For further information please contact the lubricants and solvents supplier.

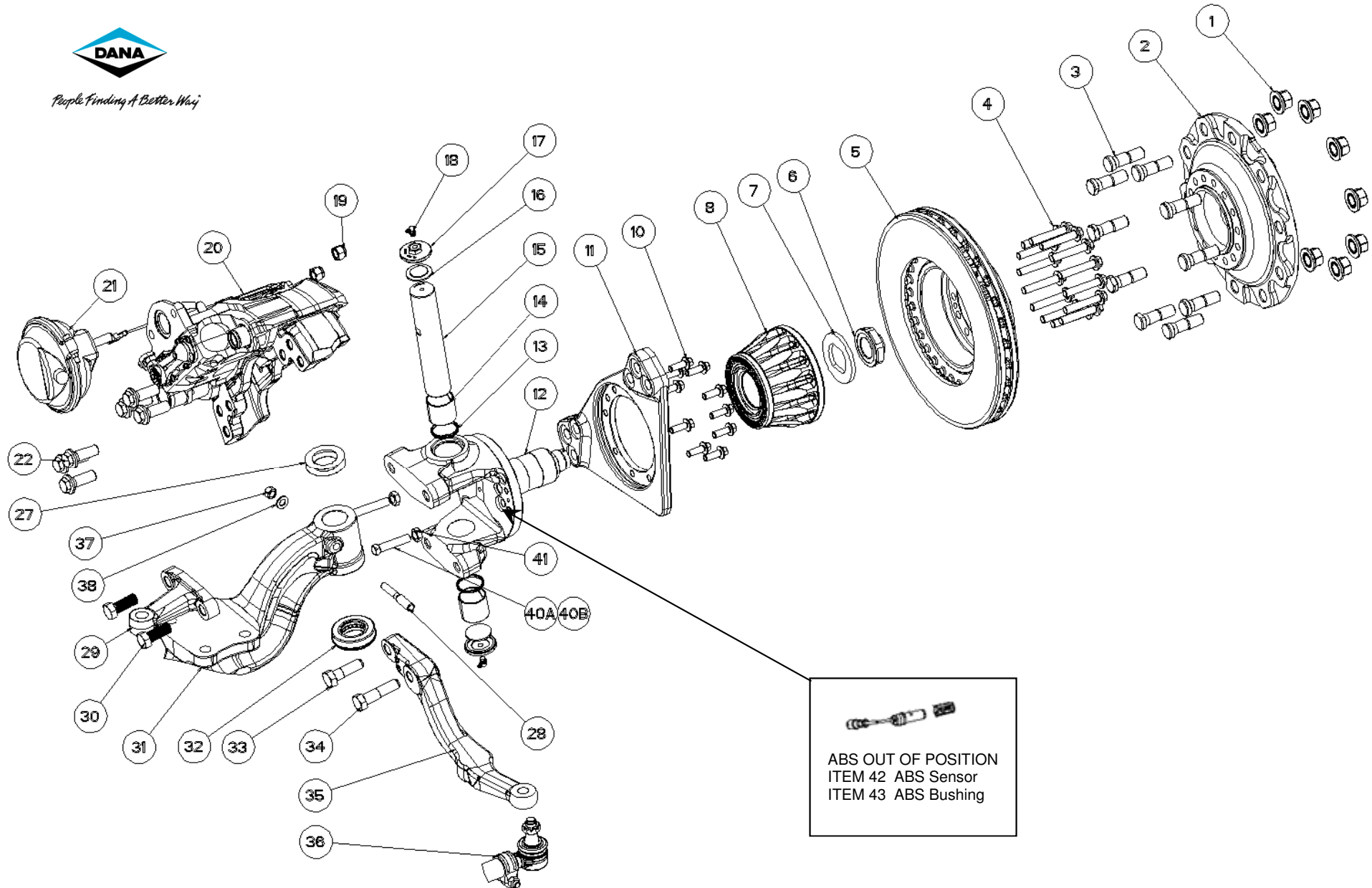
EVERY EFFORT HAS BEEN MADE TO ENSURE THE ACCURACY OF THE INFORMATION CONTAINED WITHIN THIS MANUAL.


**HOWEVER, COMMERCIAL VEHICLE PRODUCTS – EUROPE, A DIVISION OF DANA HOLDING CORPORATION, MAKES NO EXPRESSED OR IMPLIED WARRANTY OR REPRESENTATION BASED ON THE ENCLOSED INFORMATION.**

Last Modification	Approved by	Date	Issue	Eng. Change
RELEASED	P.S.	16/03/17	A	EWO28584
Items 29 & 35 changed	A.U.	21/03/19	B	EWO60291



*People Finding A Better Way*



  
ABS OUT OF POSITION  
ITEM 42 ABS Sensor  
ITEM 43 ABS Bushing

## NDS80LF 10061618 Part List & Tightening Torques

Item	Part Number	Description	Qty <sup>0</sup>
	10061618		
1	E917667	Paperboard Protector	20
2	F5138/28	Wheel hub <sup>3</sup>	2
3	833198	Wheel bolt <sup>3</sup>	20
4	F5064/55	Flanged bolt	28
5	F4866/88	Brake Disc	2
6	F5169/77	Hub Bearing – Nut	2
7	F5170/30	Hub Bearing – Collet washer	2
8	10044573	Hub Bearing – Unitized	2
10	833031	Bolt	20
11	F5171/87	Brake Mounting Bracket - LH	1
	F5171/86	Brake Mounting Bracket - RH	1
12	F5171/2	Knuckle <sup>6</sup>	2
13	820518	Kingpin – Seal <sup>2</sup>	4
14	813275	Kingpin – Bushing <sup>2,6</sup>	4
15	F4866/14	Kingpin <sup>2</sup>	2
16	971010	Kingpin – Foam insert <sup>2</sup>	4
17	971370	Kingpin – Cap <sup>2</sup>	4
18	1001414	Grease nipple (90°) <sup>2</sup>	4
19	10031188	Nut – Self Lock	4
20	10027926	Air Disc Brake (ADB) assy – LH	1
	10027925	Air Disc Brake (ADB) assy – RH	1
21	SM487/63K	Air Chamber – LH	1
	SM487/64K	Air Chamber – RH	1
22	833175	Brake fixing – Bolt	12
27	817493	Kingpin – Adjusting shim (0.13mm) <sup>2</sup>	AR <sup>1</sup>
	817494	Kingpin – Adjusting shim (0.25mm) <sup>2</sup>	AR <sup>1</sup>
28	816239	Drawkey <sup>2</sup>	2
29	10025561 (R.H.)	Top steering lever	1
30	ML6020/50X	Top steering lever – Bolt	2
31	F4922/1	Beam - Axle	1
32	220HC104	Thrust bearing <sup>2</sup>	2
33	ML6020/65X	Bottom steering lever – Bolt	2
34	ML6020/80X	Bottom steering lever – Bolt	2
35	10026624	Bottom steering lever – LH	1
	10026618	Bottom steering lever – RH	1
36	26376/10S	Socket and Tie Rod assy	1
	F4863/12E	Tie Rod Tube	1 <sup>4</sup>
	F4907/13	Clamp Assy	2 <sup>4</sup>
	F4907S	Socket assy – LH <sup>5</sup>	1 <sup>4</sup>
	F4863S	Socket assy – RH <sup>5</sup>	1 <sup>4</sup>
	F4863/15	Hardware – Castle nut <sup>5</sup>	2 <sup>4</sup>
	F4863/15A	Hardware – Split pin <sup>5</sup>	2 <sup>4</sup>

Item	Part Number	Description	Qty <sup>0</sup>
	10061618		
37	SL221/6	Drawkey – Nut <sup>2</sup>	2
38	SL238/5	Drawkey – Washer <sup>2</sup>	2
40A	818140 (R.H.)	Front Lock – Stop Bolt	1
40B	10009441	Back Lock – Stop Bolt	2
41	SL221/8	Nut – Stop Bolt	3
42	833017	ABS Sensor	2
43	830168	ABS Bushing	2

### NOTES:

- <sup>0</sup> Quantities listed are for complete axle unit
- <sup>1</sup> As Required
- <sup>2</sup> Available as a Service Kit: 12280/1 & 12280/2
- <sup>3</sup> Available as a Sub-Assembly: K26853/1
- <sup>4</sup> Comprising tie rod assembly: Item # 36 (see chart for specific part number)
- <sup>5</sup> Available as a Sub-Assembly: SF4907S (LH) & SF4863S (RH)
- <sup>6</sup> Available as a Sub-Assembly: SF5171/2

### ADDITIONAL INFORMATION (AI):

- AI1 Service Manual NDS **613513**
- AI2 Lubrication Manual **613511**

Item	Part Number	Description	Type	Torque (N-m)	Torque (ft-lbs)
1	N/A				
4	F5064/55	Flanged bolt	M14 x 1,5	236 - 260	174 - 192
6	F5169/77	Hub Bearing – Nut	M42 x 2	700 - 770	516 - 568
	F4567/77	Hub Bearing – Nut	1 3/4" - 8 UN	780 - 849	575 - 626
10	833031	Bolt	M12 x 1,75	117 - 132	86 - 97
17	971370	Kingpin – Cap	2,375" - 16 UN	88 - 108	65 - 80
19	10031188	Nut – Self Lock	M16 x 1,5	180 - 210	133 - 155
22	833175	Brake fixing – Bolt	M20 x 1,5	475 - 533	350 - 393
30	ML6020/50X	Top steering lever – Bolt	M20 x 2,5	705 - 780	520 - 575
33	ML6020/65X	Bottom steering lever – Bolt	M20 x 2,5	705 - 780	520 - 575
34	ML6020/80X	Bottom steering lever – Bolt	M20 x 2,5	705 - 780	520 - 575
37	SL221/6	Drawkey – Nut	1/2" - 20 UNF	69 - 84	51 - 62
41	SL221/8	Nut – Stop Bolt	5/8" - 18 UNF	1222 - 163	90 - 120



**Dana Holding Corporation**

Commercial Vehicle Products – Europe

Dana Automoción S.A.

Polígono Industrial de Landaben, Calle E

31012 Pamplona / Spain

TEL (+34-948) 289 100 FAX (+34-948) 188 164

**APPLICATION POLICY**

Capability ratings, features and specifications vary depending upon the model type of service. Applications approvals must be obtained from Commercial Vehicle Products - Europe. We reserve the right to change or modify our product specifications, configurations, or dimensions at any time without notice.

*People Finding A Better Way<sup>®</sup>*