

The background of the page is a collage of various mechanical parts in shades of blue. These include gears, bearings, shafts, and other components, arranged in a somewhat chaotic but organized manner. A white box with a black border is overlaid on the right side of the page, containing text.

Customer: **DENNIS EAGLE**

Model: **G171 - G171D**

Issue: **G**

The description, testing procedures, and specifications contained in this parts / service publication were current at time of writing. This manual will not be updated. If in doubt about any aspect of maintenance or servicing of the axle please contact the vehicle builder or our service department directly.

**SPICER**<sup>®</sup> products are subject to continuous development and we reserve the right to modify procedures and to make changes in specifications at any time without prior notice and without incurring in any obligation.

The recommendations of the vehicle manufacturer should be considered as the primary source of service information regarding this **SPICER**<sup>®</sup> product. This manual is intended to be used as a supplement to such information.

Any references to brand names in this publication are made simply as an example of the types of tools and materials recommended for use and, as such, should not be considered as an endorsement.

This manual is the property of **Commercial Vehicle Products – Europe**, a division of **Dana Holding Corporation**, and may not be copied or disseminated without prior agreement of **Commercial Vehicle Products– Europe**, a division of **Dana Holding Corporation**.

**Commercial Vehicle Products – Europe**, a division of **Dana Holding Corporation**, recommends following all manufacturers recommendations for the proper handling and disposal of lubricants and solvents. For further information please contact the lubricants and solvents supplier.

EVERY EFFORT HAS BEEN MADE TO ENSURE THE ACCURACY OF THE INFORMATION CONTAINED WITHIN THIS MANUAL.

**HOWEVER, COMMERCIAL VEHICLE PRODUCTS – EUROPE, A DIVISION OF DANA HOLDING CORPORATION, MAKES NO EXPRESSED OR IMPLIED WARRANTY OR REPRESENTATION BASED ON THE ENCLOSED INFORMATION.**

Last Modification	Date	Approved by	Date	Issue	Eng. Change
	16/09/09	EM	24/09/09	<b>B</b>	<b>NC09555</b>
	03/05/10	C.G.	03/05/10	<b>C</b>	<b>NC10477A</b>
	27/07/10	A.U.E.	27/07/10	<b>D</b>	<b>NC10544</b>
	16/12/10	CGM	16/12/10	<b>E</b>	<b>NC10608A</b>
	17/01/11	CGM	17/01/11	<b>F</b>	<b>NC11410</b>
ABS Sleeve updated	22/12/11	CGM	22/12/11	<b>G</b>	<b>NC11583</b>

# DENNIS EAGLE

## G171 & G171D

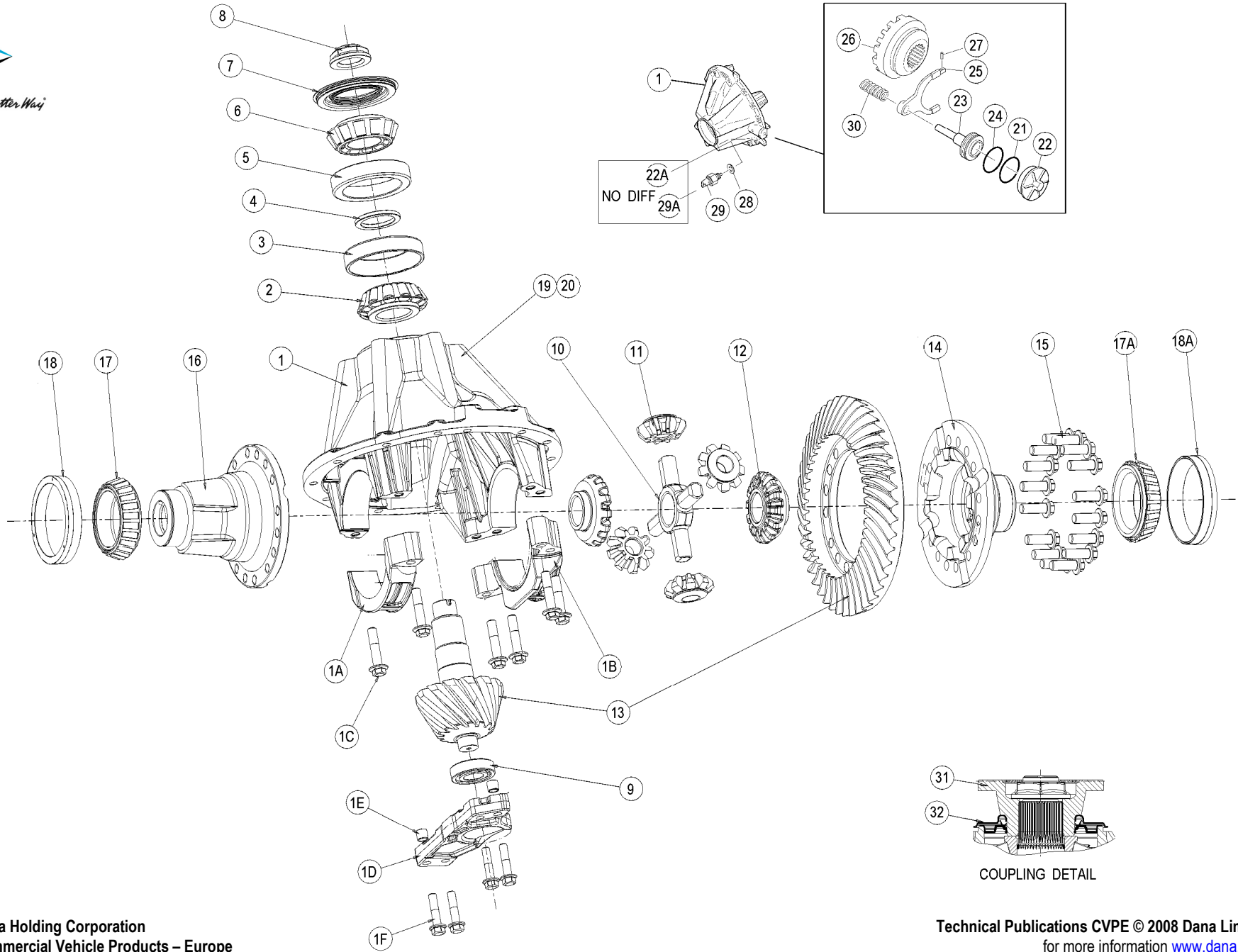
		MECHANICAL				PNEUMATIC					
		NARROW		WIDE		NARROW			WIDE		
		DIFF LOCK	NO DIFF	DIFF LOCK	NO DIFF	DIFF LOCK	NO DIFF	DIFF LOCK	NO DIFF	DIFF LOCK	NO DIFF
AXLE	DANA	826300	826301	826302	826303	826304	826331	826305	826306	826322	826307
	DEN.EGL	617525	617524	617529	617528	617527	Xxxx	617526	617531	617805	617530
HEAD		831642	831641	831642	831641	831642	831645	831641	831642	831645	831641
HOUSING		603712	603712	603714	603414	603713	603713	603713	603715	603715	603715

		AXLE REF.	826300	826302	826304	826331	826306	826322	826301	826303	826305	826307
		AXLE MODEL	G171D						G171			
		RATIO	6.83	6.83	6.83	6.14	6.83	6.14	6.83			
		HEAD ASSY	831642	831642	831642	831645	831642	831645	831641			
		HOUSING	603712	603714	603713	603713	603715	603715	603712	603714	603713	603715
Item	Description	Qty	Part	Part	Part	Part	Part	Part	Part	Part	Part	Part
1	CARRIER & CAPS ASSY.	1	131021						131021			
1A	BEARING CAP R.H.	1	131013						131013			
1B	BEARING CAP L.H.	1	131011						131011			
1C	BOLT M18x1,5x85 HEX	6	131016						131016			
1D	WEB - BEARING PILOT	1	131015						131015			
1E	BUSHING, DOWEL	2	131018						131018			
1F	BOLT M16x1,5x70	4	131017						131017			
2	BEARING CONE (PINION INNER)	1	131050						131050			
3 & 5	BRARING CUP (CARRIER)	2	131051						131051			
4	BEARING SPACER	As rqed	131070						131070			
6	BEARING CONE (PINION OUTER)	1	131052						131052			
7	OIL SEAL	1	131008						131008			
8	LOCKNUT-HEX FLANGED (PINION)	1	131095						131095			
9	BEARING (PINION PILOT)	1	126187						126187			
10	SPIDER	1	131039						131039			
11	SIDE PINION	4	131040						131040			
12	SIDE GEAR	2	300DG101						300DG101			
13	GEAR PINION SET	1	131455	131455	131455	131454	131455	131454	131455			
14	DIFF. CASE FLANGE	1	131029						131029			
15	SCREW M20x1,5x55	16	131473						131473			
16	DIFF. CASE PLAIN	1	131752	131752	131752	131476	131752	131476	131752			
17	BEARING CONE (DIFF CASE PLAIN)	1	131042						131042			
17A	BEARING CONE (DIFF CASE FLANGE)	1	131041						131041			
18	BEARING CUP (DIFF CASE PLAIN)	1	131048						131048			
18A	BEARING CUP (DIFF CASE FLANGE)	1	131044						131044			
19	IDENTIFICATION TAG	1	111197						111197			
20	RIVET POP	2	640293						640293			
31	COUPLING FLANGE	1	832052						832052			
32	MUD SLINGER	1	131214						131214			
	DIFF LOCK											
21	O-RING (DIFF LOCK CAP)	1	131665						131665			
22	CAP DIFF LOCK	1	131096						131096			
23	ROD PUSH	1	131237						N / A			
24	O-RING	1	210180						N / A			
25	FORK SHIFT	1	131101	131101	131101	131099	131101	131099	N / A			
26	CLUTCH SLIDING	1	131104						N / A			
27	SPRING PIN (SHIFT FORK)	1	210020						N / A			
28	WASHER NYLON	1	129034						N / A			
29	SWITCH	1	129035						N / A			
30	SPRING COMPRESSION	1	131102						N / A			
22A	PLUG (DIFF LOCK BOSS)	1	N / A						127195			
29A	O-RING PLUG (DIFF LOCK BOSS)	1	N / A						131487			

	AXLE REF.	826300	826302	826304	826306	826322	826301	826303	826305	826307	
	AXLE MODEL	G171D					G171				
	RATIO	6.83	6.83	6.83	6.83	6.14	6.83				
	HEAD ASSY	831642	831642	831642	831642	831645	831641				
	HOUSING	603712	603714	603713	603715	603715	603712	603714	603713	603715	
Item	Description	Qty	Part	Part	Part	Part	Part	Part	Part	Part	
<b>HEAD TO HOUSING FASTENERS</b>											
33	BOLT M16x1,5x55	10				131105					131105
34	BOLT M16x1,5x85	4				131106					131106
<b>PLUGS</b>											
35	PLUG, MAGNETIC 3/4-14 NPSF	1				54254					54254
36	PLUG, MAGNETIC 3/4-14 NPSF	1				54254					54254
37	BREATHER KIT	1				828236					828236
<b>AXLE SHAFT</b>											
38	AXLE SHAFT LH	1	834236	834203	834236	834203	834203	834236	834203	834236	834203
39	AXLE SHAFT RH	1	834237	834211	834237	834211	834211	834224	834202	834224	834202
40	BOLT VERBUS RIPP M.16	20	830434	830434	830434	830434	830434	830434	830434	830434	830434
<b>BRAKES</b>											
41	BRAKE LH	1				828120					828120
42	BRAKE RH	1				828121					828121
43	BOLT M18x1,5x65 (BRAKE - HOUSING)	12				830464					830464
44	ACTUATOR LH	1	828108	828108	828122	828122	828122	828108	828108	828122	828122
45	ACTUATOR RH	1	828107	828107	828122	828122	828122	828107	828107	828122	828122
46	NUT M16 (ACTUATOR)	4				MX-1-1601					MX-1-1601
<b>HUB &amp; ROTOR ASSY</b>											
	HUB & ROTOR ASSY	2				829060					829060
47	HUB	2				829327					829327
48	BEARING UNIT	2				833217					833217
49	ROTOR	2				829707					829707
50	WHEELBOLT M22x1,5-6g	20				833191					833191
51	WHEELNUT M22	20				833206					833206
52	BOLT M16x1,5x75 (HUB-ROTOR)	20				830465					830465
53	NUT & WASHER KIT	2				829297					829297
54	HUB NUT M86x2	2				833066					833066
55	WASHER NUT	2				833067					833067
<b>ABS</b>											
56	ABS SENSOR	2				833207					833207
57	ABS BUSHING	2				830168					830168
58	ABS BUSHING ON HOUSING	2				603338					603338



People Finding A Better Way<sup>®</sup>

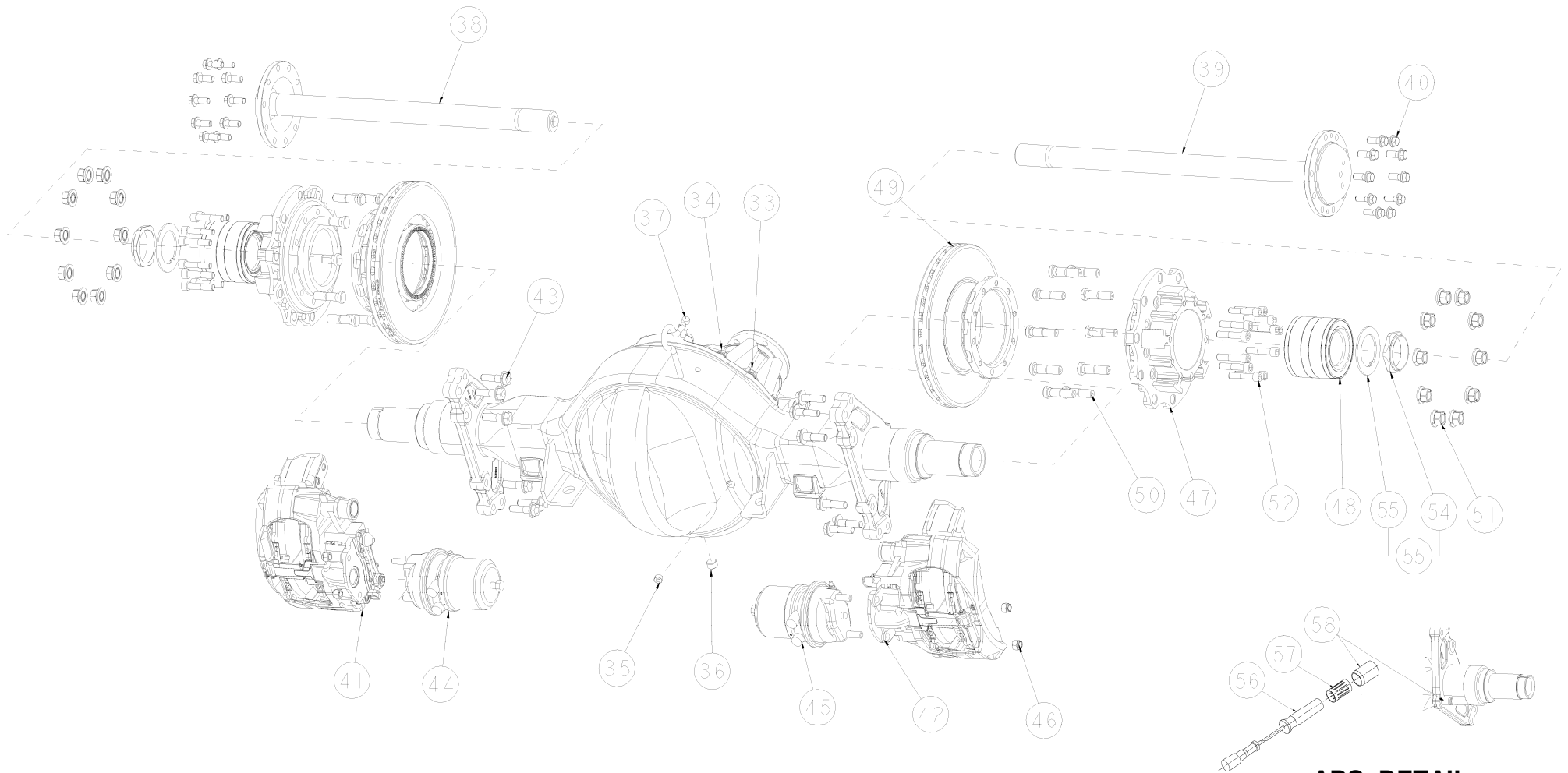


Dana Holding Corporation  
Commercial Vehicle Products – Europe

Technical Publications CVPE © 2008 Dana Limited  
for more information [www.dana.com](http://www.dana.com)



People Finding A Better Way<sup>®</sup>



**ABS DETAIL**

Dana Holding Corporation  
Commercial Vehicle Products – Europe

Technical Publications CVPE © 2008 Dana Limited  
for more information [www.dana.com](http://www.dana.com)



*People Finding A Better Way*



**Dana Holding Corporation**

Commercial Vehicle Products – Europe

Dana Automoción S.A.

Polígono Industrial de Landaben, Calle E

31012 Pamplona / Spain

TEL (+34-948) 289 100 FAX (+34-948) 188 164

**APPLICATION POLICY**

Capability ratings, features and specifications vary depending upon the model type of service. Applications approvals must be obtained from Commercial Vehicle Products - Europe. We reserve the right to change or modify our product specifications, configurations, or dimensions at any time without notice.

*People Finding A Better Way*<sup>®</sup>